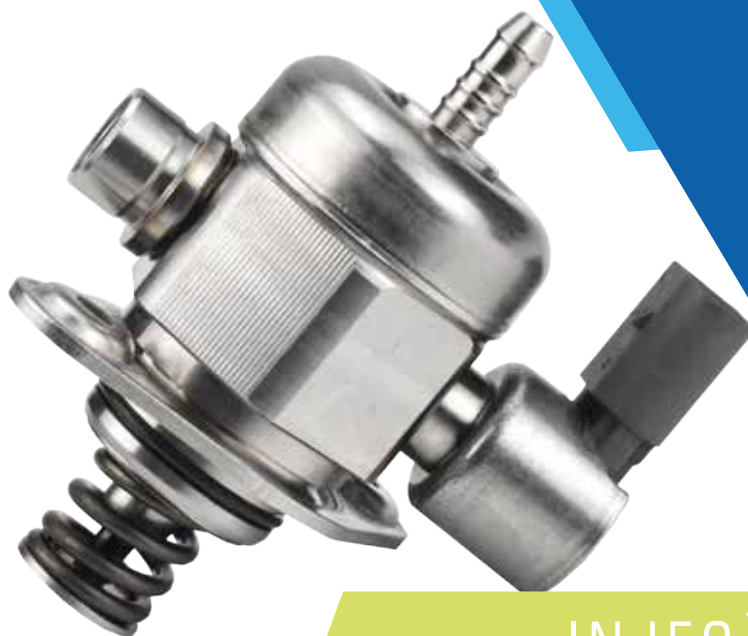




A EVOLUÇÃO É GAUSS



INJEÇÃO

BOMBA DE ALTA PRESSÃO









FOTO	CÓD. GAUSS	SUBSTITUI	APLICAÇÃO
	GI8001 Pressão: 3 BAR	BOSCH: 0 280 160 557, 0 280 160 507, 0 280 160 560, 0 280 160 505, 0 280 160 358; CHRYSLER: 53030349; CITROËN: 198505; DODGE: 53030349; FIAT: 7529724, 7078640, 7078669, 46457494; FORD: F8Z29C968AA; GM: 24500228, 24501695, 93225088, 90444222; PEUGEOT: 198505; RENAULT: 40414502, 7700872504; VW: 037133035C, 271330521, 271980522, 401330352	ALFA ROMEO: 146 1.4 1995>2002, 146 1.6 1995>2002, 146 1.8 1995>2002, 146 2.0 1995>2002, 166 2.0 Turbo 1995>2002, Spider 2.0 1995>2000; ASIA: Towner 0.8 1998>; AUDI: A3 1.8 1999>2006, TT 1.8 Turbo 2000>2006; CITROËN: AX 1.4 1992>, Berlingo 1.8 1997>, Evasion 2.0 1998>, Xantia 1.8 1995>2001, Xantia 1.8 1997>2001, Xantia 2.0 1993>1998, Xantia 2.0 Turbo 1995>1998, Xantia 3.0 1996>1998, Xsara 1.4 1998>, Xsara 1.8 1998>2000, Xsara 2.0 1999>2000, ZX 1.9 1991>1998, ZX 2.0 1991>1997; DODGE: Avenger 2.0 1995>1996, B150 3.9 1992>1993, B250 3.9 1992>1993, D150 3.9 1992>1993, D250 3.9 1992>1993, Dakota 3.9 1992>1993, W150 3.9 1992>1993; FIAT: Brava 1.6 1999>2001, Brava 2.0 1995>, Coupe 2.0 1995>, Fiorino 1.5 1997>2004, Fiorino 1.6 1995>1996, Marea 2.0 1998>2005, Palio Weekend 1.0 1999>2000, Palio Weekend 1.5 1997>2004, Palio Weekend 1.6 1996>2000, Palio 1.0 1996>2001, Palio 1.3 1998>, Palio 1.5 1996>2000, Palio 1.6 1996>2001, Siena 1.0 1999>2000, Siena 1.5 1998>2004, Siena 1.6 1996>2000, Strada 1.5 1999>2004, Strada 1.6 1998>2000, Uno 1.0 1998>2003, Uno 1.3 2001>, Uno 1.6 1994>1995; GM: C-20 4.1 1996, Grand Blazer 4.1 1998>1999, Lumina 3.8 1992, Omega 4.1 1994>1998, Silverado 4.1 1996>2001, Suprema 4.1 1994>1996; HYUNDAI: Atos 1.0 2000>2003; MINI: Cooper 1.6 2002>2008; PEUGEOT: 106 1.4 1991>, 205 1.6 1991>, 205 1.9 1991>, 306 1.6 1993>1998, 306 1.8 1997>2003, 306 2.0 1993>2002, 405 1.6 1994>1997, 405 1.8 1992>1997, 405 2.0 1994>1997, 406 2.0 1996>2004, 406 3.0 1996>2005, 605 2.0 1992>1999, 605 3.0 1997>1999, 806 2.0 1994>2002, Partner 1.8 1997>2002; RENAULT: Clio 1.0 1999>2006, Clio 1.2 1991>, Clio 1.6 1996>, Clio 1.8 1991>, Espace 2.0 1996>2003, Espace 3.0 1996>2003, Laguna 1.6 1997>2002, Laguna 1.8 1994>2001, Laguna 2.0 1994>2001, Megane 1.6 1996>, Megane 2.0 1996>, R19 1.8 1992>1996, Safrane 2.0 1992>1996, Safrane 3.0 1992>1996, Scenic 1.6 1996>2001, Scenic 2.0 1996>2001, Twingo 1.2 1996>; SEAT: Cordoba 1.0 1999>2004, Cordoba 1.4 1999>2004, Cordoba 1.6 1999>2004, Ibiza 1.0 2000>, Inca 1.6 1998>; VW: Beetle 1.8 Turbo 1999>2005, Beetle 2.0 1998>2005, Bora 2.0 2002>2009, Gol 1.0 1996>1999, Gol 1.6 1996>2005, Gol 1.8 1996>1999, Gol 2.0 1996>2002, Gol 1.0 Turbo 2000>2003, Golf 1.8 2000>2006, Golf 2.0 1992>2006, Golf 2.8 1996>2005, Jetta 1.8 Turbo 2000>2005, Jetta 2.0 1993>2005, Jetta 2.8 1996>2004, Kombi 1.6 1997>2005, Parati 1.6 1996>2005, Parati 1.8 1996>1999, Parati 2.0 1996>1999, Parati 1.0 Turbo 1999>2005, Parati 2.0 1999>2002, Passat 2.0 1995>1996, Passat 2.8 1997>, Polo 1.8 1996>2005, Polo 2.0 1996>2005, Quantum 1.8 1996>2001, Quantum 2.0 1996>2001, Santana 1.8 1996>2005, Santana 2.0 1996>2005, Saveiro 1.6 1996>2005, Saveiro 1.8 1996>2005, Saveiro 2.0 1997>2005
	GI8002 Pressão: 2,7 BAR	GM: 93359930; FORD: 2N1U9C968AA, 928F9C968B1C, 6667685, 928F9C968A1C, 96MF9C968DA, F8DZ9C968AA, YS6U9C968AA, XF2Z9C968AH, XF2Z9C968AA, X2FZ9C968AA, F8DZ9C968AB; BOSCH: F 000 DR0 219, F 000 DR0 213, 0 280 160 628, 0 280 160 509, 0 280 160 551, 0 280 160 585; DELPHI: FP10305	FORD: Courier 1.4 1997>1999, Courier 1.6 1999>, E-150 4.2 1999>2003, E-250 4.2 1999>2003, E-350 6.8 2000>2004, E-450 6.8 2000>2004, E-550 6.8 2002>2003, Ecosport 1.0 2003>2008, Ecosport 1.6 2003>2008, Escort 1.6 2000>2002, Escort 1.8 1996>2002, Excursion 6.8 2000>2005, F-150 4.2 2004>, F-150 6.8 1999>2003, F-250 6.8 2000>2004, F-350 6.8 2000>2004, F-450 6.8 2000>2004, F-550 6.8 2000>2004, Fiesta 1.0 2001>2005, Fiesta 1.4 1998>1999, Fiesta 1.6 1999>2008, Focus 1.6 2003>2007, Ka 1.0 1999>2008, Ka 1.6 2001>2008, Mondeo 2.0 E 1994>1998, Taurus 3.0 1994>1997, Windstar 3.0 1999>2003 GM: Corsa 1.0 2000>2005
	GI8004 Pressão: 3,5 BAR	GM: 93298257, 93281610, 93305850; HYUNDAI: 31380M4000; VW: 5Z0133035C; BOSCH: F 000 DR0 283, F 000 DR0 225, 0 280 160 814, F 000 DR0 208, F 000 DR0 214, F 000 DR0 221; DELPHI: FP10342	CITROËN: C3 1.6 2001>2005, Xsara Picasso 2.0 2001>; FIAT: Doblò 1.3 2001>2006, Doblò 1.6 2001>2003, Doblò 1.8 2003>2006, Idea 1.4 2006>2010, Idea 1.8 2006>2010, Palio Weekend 1.3 2000>2003, Palio Weekend 1.8 2004>, Palio 1.0 2005>2015, Palio 1.3 2003>2005, Palio 1.4 2006>2012, Palio 1.6 2001>2003, Palio 1.8 2003>2010, Siena 1.0 2005>2012, Siena 1.3 2000>2005, Siena 1.4 2005>2007, Siena 1.4 Tetrafuel 2006>, Siena 1.8 2004>2008, Strada 1.3 2002>2005, Strada 1.8 2003>2004, Uno 1.0 2001>; GM: Celta 1.0 2000>2002, Celta 1.4 2003>2006; HYUNDAI: Creta 1.6 2017>2017; PEUGEOT: 206 1.0/1.4/1.6 1998>; RENAULT: Clio 1.0/1.6 2000>, Fluence 2.0 2011>, Megane 1.6/2.0 2000>2005, Scenic 1.6/2.0 2000>, Twingo 1.0 2000>2001; TOYOTA: Corolla 1.8 2007>2010, Corolla 2.0 2010>
	GI8005 Pressão: 3,8 BAR	GM: 93300564, 93308886, 93328341, 93378223, 93389322; BOSCH: F 000 DR0 215, F 000 DR0 216, F 000 DR0 217, F 000 DR0 218, F 000 DR0 230, 0 280 160 615; DELPHI: FP10352	FIAT: Stilo 1.8 2002>, Stilo 1.8 2005>2010, Stilo 1.8 2002>, Stilo 2.4 2002>; FORD: Ecosport 1.6 2005>2007, Ecosport 2.0 2004>2012, Focus 2.0 2005>2008; GM: Astra 2.0 2004>2009, Blazer 2.4 2007>2012, Celta 1.0 2005>2015, Cobalt 1.4 2012>2015, Cobalt 1.8 2012>2015, Corsa 1.0 2002>2009, Corsa 1.4 2007>2012, Corsa 1.8 2002>2012, Cruze 1.8 2012>2014, Meriva 1.4 2008>2012, Meriva 1.8 2002>2003, Montana 1.4 2007>2010, Montana 1.8 2003>2007, Onix 1.0 2012>2014, Onix 1.4 2013>2015, Prisma 1.0 2009>2011, Prisma 1.4 2006>2015, S10 2.4 2007>2012, Sonic 1.6 2012>2014, Spin 1.8 2012>2014, Vectra 2.0 2005>2011, Vectra 2.4 2005>2009, Zafira 2.0 2004>2012; MERCEDES BENZ: B200 2.0 Turbo 2008>
	GI8006 Pressão: 3 BAR	FORD: YL8U9C375AB; GM: 93274455, 93363060, 93363264; VW: 373133035A; BOSCH: F 000 DR0 206, F 000 DR0 207, F000DR0212; MAGNETI MARELLI: RP132002; DELPHI: FP10304	FORD: Ranger 2.5 1997>; GM: Astra 1.8 1998>2004, Astra 2.0 1999>2005, Zafira 2.0 2001>2005; VW: Gol G2 1.0 1997>1999, Gol G2 1.6 1998 >, Gol G3 1.0 1999>2005, Parati G2 1.0 1997>1999, Parati G2 1.6 1998 >, Parati G3 1.0 1999>2005
	GI8009 Pressão: 4,2 BAR	GM: 94715560, 94715561; NISSAN: 170409LH1B, 110069, 116104, 170401HL1A; VW: 5Z0133035B, 5Z0133035D; BOSCH: F 000 DR0 222, F 000 DR0 223	CITROËN: C3 1.4 2005>2012, C3 1.6 2005>2012, C4 Lounge 2.0 2013>, Xsara Picasso 1.6 2006>2012; FIAT: 500 1.4 2011>, Grand Siena 1.4 2012>, Grand Siena 1.4 Tetrafuel 2012>, Grand Siena 1.6 E.TorQ 2012>, Idea 1.6 2010>, Idea 1.8 2010>, Linea 1.8 2010>, Palio Weekend 1.6 2010>2012, Palio Weekend 1.8 2010>, Palio 1.0 2011>, Palio 1.4 2011>, Palio 1.6 2010>, Punto 1.4 2012>, Punto 1.6 2012>, Punto 1.8 2012>, Siena 1.6 2010>2012, Strada 1.8 2010>, Uno 1.0 2010>, Uno 1.4 2010>; GM: Agile 1.4 2009>, Montana 1.4 2010>; HYUNDAI: Tucson 2.0 2012>; NISSAN: Kicks 1.6 2016>, March 1.0 2011>, March 1.6 2011>, Sentra 2.0 2009>, Versa 1.0 2015>, Versa 1.6 2011>; PEUGEOT: 206 1.4 2006>2009, 206 1.6 2005>2008, 208 1.5 2013>, 307 1.6 2006>, 307 2.0 2008>, 308 1.6 2012>, 408 1.6 Turbo 2012>, 408 2.0 2011>, Hoggar 1.4 2010>, Hoggar 1.6 2010>, Partner 1.6 2010>; VW: CrossFox 1.6 2005>, Fox 1.0 2003>2006, Fox 1.6 2003>2004, Gol G3 1.0 2004>2006, Gol G3 1.6 2004>2007, Gol G3 1.8 2004>2005, Gol G4 1.0 2005>, Gol G4 1.6 2004>2008, Gol G4 1.8 2004>2008, Gol G5 1.0 2008>2012, Gol G5 1.6 2008>2012, Golf 1.6 2006>, Golf 1.8 1992>1999, Kombi 1.4 2006>, Parati G3 1.6 2004>2007, Parati G3 1.8 2004>2005, Parati G4 1.6 2004>2008, Parati G4 1.8 2004>2008, Polo 1.6 2004>, Polo 2.0 2008>, Saveiro G5 1.6 2009>, SpaceFox 1.6 2006>, Voyage 1.0 2008>2012, Voyage 1.6 2008>2012

FOTO	CÓD. GAUSS	SUBSTITUI	APLICAÇÃO
	GI8010 Pressão: 3,11 BAR	GM: 17113271; ISUZU: 8171222830; DELPHI: PRD0001	GM: Corsa Hatch 1996>2008, Omega 1993>1998
	GI8013 Pressão: 4,2 BAR	GM: 12568878; VW: 041133035A; CADILLAC: 9158978; MAGNETI MARELLI: 40442201, RPM100; BOSCH: F 000 DR0 442	GM: Blazer 4.3 2001>, S10 4.3 2001>; VW: Gol G4 1.6 2007>, Saveiro G4 1.8 2005>; CADILLAC: CTS 3.2 2003>2004, CTS 3.6 2004>
	GI8014 Pressão: 3,5 BAR	AUDI: 4669464, 4883076; BUICK: 24503229; BOSCH: 0 280 160 562, 0 280 160 560, 0 280 160 593; DELPHI: FP10351; FORD: 2N1U9C968BA; MITSUBISHI: 4669464, 4883076, M04883076; MAGNETI MARELLI: RPM78, 40439701; PONTIAC: 24506988; VW: 026133035	AUDI: 90 2.8 1995>, A4 1.8 1997>2002, A4 2.8 1996>2001, A4 3.0 2002>2006, A6 2.8 1995>2004, A8 4.2 V8 1997>2006, Allroad Quattro 2.7 Turbo 2001>2005, Allroad Quattro 4.2 2003>2005, RS6 4.2 2003>2014, S3 1.8 Turbo 2000>2003, S4 2.7 2000>2002, S4 4.2 2005>2008, S5 4.2 2008>, S6 2.2 Turbo 1995>1997, S8 4.2 2001>2003, TT 1.8 Turbo 2014>2006; CITROËN: Xsara 2.0 2001>; FIAT: Bravo 1.4 2011>2016, Linea 1.4 2009>2012, Punto 1.4 2009>2016; FORD: Courier 1.6 2008>2013, Ecosport 1.6 2005>2012, Fiesta 1.0 2014>2014, Fiesta 1.6 2014>2014, Focus 1.6 2007>2009, Ka 1.0 2008>2013, Ka 1.6 2008>2013; FIAT: Bravo 1.4 2011>2016, Linea 1.4 2009>2012, Punto 1.4 2009>2016; FORD: Courier 1.6 2008>2013, Ecosport 1.6 2005>2012, Fiesta 1.0 2014>2014, Fiesta 1.6 2014>2014, Focus 1.6 2007>2009, Ka 1.0 2008>2013, Ka 1.6 2008>2013; MITSUBISHI: Eclipse 2.0 1995>1996, Pajero TR4 2.0 2010>; VW: Gol G3 1.6 2003>2005, Gol G3 1.8 2003>2005, Gol G4 1.6 2005>2010, Gol G4 1.8 2005>2010, Gol G5 1.6 2008>2010, Golf 1.8 1994>1996, Golf 2.8 1995>, Golf 3.2 2014>, Parati G3 1.6 2014>2006, Parati G4 1.8 2006>, Passat 1.8 1998>2005, Passat 2.8 1993>2005, Passat 4.0 2002>2014, Saveiro G3 1.6 2005>2006, Saveiro G3 1.8 2005>2006, Corrado 2.8 1995>; PORSCHE: 911 3.6 Boxer 2007>2011
	GI8015 Pressão: 4 BAR	LAND ROVER: LR016319; VW: 078133534A	AUDI: 100 2.8 1992>1994, 80 2.8 1991>1995, 80 2.6 1992>1995, 90 2.8 1993>1994, A4 3.0 2001>2005, A4 1.8 Turbo 1994>2001, A4 1.8 1994>2001, A4 2.6 1994>1998, A4 2.8 1994>1999, A4 2.8 1996>2000, A4 2.4 1997>2001, A6 2.7 Turbo 2000>2005, A6 3.0 2001>2004, A6 2.8 1995>2001, A6 2.4 1997>2001, A6 2.7 Biturbo 1997>2004, A6 1.8 Turbo 1998>2001, A6 4.2 1999>2004, A8 6.0 2004>2005, A8 4.2 1994>1998, A8 4.2 1998>2002, RS4 2.7 Turbo 2000>, RS6 4.2 2002>2005, S4 4.2 2003>2005, S4 2.2 1992>1994, S4 2.7 Biturbo 1997>2000, S6 2.2 Turbo 1994>1997, S6 4.2 1999>2005, S8 4.2 1996>2001; LAND ROVER: Defender 2.5 1998>2007, Discovery 2.5 1998>2004; VW: Golf 3.2 2002>2004, Golf 2.8 1992>1996, Jetta 2.8 1994>1995, Passat 1.8 1996>2000, Passat 2.0 1997>2005, Passat 2.8 1997>2005, Corrado 2.8 1991>1995
	GI8017 Pressão: 3,2 BAR	HONDA: 16015-SAA-006	HONDA: CR-V 2.4 2007>2011, Fit 1.5 2007>2008; TOYOTA: Avalon 2.5 Híbrido 2013>2014, Camry 2.4 2007>2011, Camry 2.5 2010>2014, Corolla 1.8 2007>2014, Corolla 2.4 2009>2011, Highlander 2.7 2009>2014, Highlander 3.5 2008>2010, Matrix 1.8 2007>2014, Matrix 2.4 2009>2013, Prius 1.5 2012>2014, Prius 1.8 Híbrido 2010>2014, RAV4 2.4 2006>2008, RAV4 2.5 2009>2014, RAV4 3.5 2006>2012, Sienna 3.5 2007>2010, Venza 2.7 2009>2014, Venza 3.5 2009>2013, Yaris 1.5 Híbrido 2006>2014; LEXUS: CT200h 1.8 2011>2013, ES300h 2.5 2013>2014, GS430 4.3 V8 32v 2005>2007, HS250h 2.4 2010>2012, RX350 3.5 2007>2010
	GI8018 Pressão: 4 BAR	HONDA: 17052-SNA-000	FORD: Fusion 2.3 2006>; HONDA: Civic 1.8 2006>2011, Civic 2.0 2006>2011, Odyssey 3.5 2005>2011, Ridgeline 3.5 2010>2013; LEXUS: GS300 3.0 2006>2006, GS350 3.5 2007>2011, IS250 2.5 2006>2012, IS350 3.5 2006>2013
	GI8023 Pressão: 3 BAR	DAEWOO: 96184228; GM: 89054415	DAEWOO: Lanos 1.5, Nexia 1.5
	GI8024 Pressão: 3,4 BAR	KIA/ HYUNDAI: 31380-2D000, 31380-3K000	HYUNDAI: Elantra 2.0 2001>2007, Sonata 2.4 2006>2010; KIA: Optima 2.4 2006>2010
	GI8027 Pressão: 3,5 BAR	HYUNDAI: 35301-25700, 35301-25000	HYUNDAI: Accent 1.5 2000>2002
	GI8028 Pressão: 4 BAR	HONDA: 16740SNZ003, 16740SNZ0030; PORSCHE: 95562084130, 95562084110; BOSCH: F 000 DR0 226, F 000 DR0 228, F 000 DR0 231	CHERY: Celer 1.5 2013>; GM: Cruze 1.8 2012>2015, Onix 1.0 2012>2016, Prisma 1.0 2013>2016, S10 2.4 2012>; HONDA: CR-V 2.0 2013>, City 1.5 2009>, Civic 1.8 2006>, Civic 2.0 2013>, Fit 1.4 2008>, Fit 1.4 2006>2008, Fit 1.5 2008>, HR-V 1.8 2015>; PORSCHE: Cayenne 3.2 2004>2006

FOTO	CÓD. GAUSS	SUBSTITUI	APLICAÇÃO
	GI8031 Pressão: 3,53 BAR	KIA/ HYUNDAI: 313802E000	HYUNDAI: Tucson 2.0 4Cil 16v Gasolina 2005>2009, Tucson 2.7 V6 24v Gasolina 2005>2009; KIA: Sportage 2.0 4Cil 16v Gasolina 2005>2010, Sportage 2.7 V6 24v Gasolina 2005>2010
	GI8032 Pressão: 3,54 BAR	KIA/ HYUNDAI: 313802H000	HYUNDAI: Elantra 2.0 4Cil 16v 2008>2012, i30 2.0 4Cil 16v 2009>2012; KIA: Forte Koup 2.0 4Cil 16v 2010>2013, Forte Koup 2.4 4Cil 16v 2010>2013, Forte 2.0 4Cil 16v 2010>2013